

# Project Reference

## Kiddicare

### :: Installation requirements

Due to huge success, Kiddicare were forced to reconsider their retail operations and as a result decided to build a brand new showroom and warehouse in Hampton, Peterborough.

A range of floor finishes were required to suit different areas of the development. As well as offering practical characteristics such as durability, the floor finish had to be aesthetically striking and unique with the ability to appeal to visitors of all ages. The total installation was in excess of 5,000sqm.

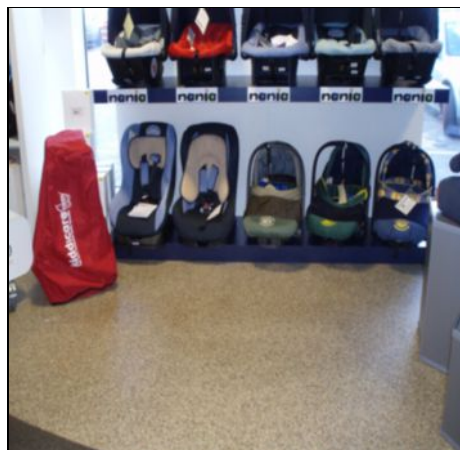
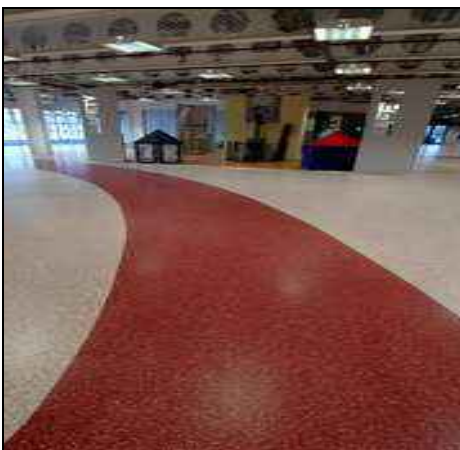
### :: Why National Flooring?

Kiddicare were looking for an extremely unique and prominent floor finish and so the Degafloor Flake system was specified due to the flexibility of colour variations. After much deliberation and with the help of National Flooring, Kiddicare chose three variations of the system in contrasting colours for the main retail areas.

During the design stage Kiddicare proposed the addition of walkways so National Flooring measured and laid stainless steel trims in unique curved designs on each of the three floors. The reverse in red on the walkways complemented the main retail areas, which were chosen in white, red and grey.

The Degafloor Flake system, which was also installed into other areas including toilets, changing rooms and staff offices offers outstanding durability and flexibility with regards to aesthetics where an almost endless range of finishes is available.

To generate a big impact in the car seat area a stone carpet was chosen in two colours, black and natural stone. By moulding stainless steel trims a road effect was created, adding character and a distinctive look to the in-store area. The Degafloor FB system was installed in the restaurant's kitchen and storeroom areas, providing outstanding slip resistance to food preparation areas.



**NATIONAL FLOORING**  
Floors For Industry



**The unique bonding technology of Degafloor MMA resins ensures that should Kiddicare wish to change the colour scheme or walkways in the future a cost effective solution can be achieved by overlaying the existing finish.**

**The National Flooring Company Ltd**  
Crusader House  
High Street  
Maxey  
Peterborough  
PE6 9HQ  
UK  
T:01778 343670 F:01778 380912  
W: [www.nationalflooring.co.uk](http://www.nationalflooring.co.uk)  
E: [enquiries@nationalflooring.co.uk](mailto:enquiries@nationalflooring.co.uk)