

# Project Reference



**NATIONAL FLOORING**  
Floors For Industry

## Regent Inns

### :: Installation requirements

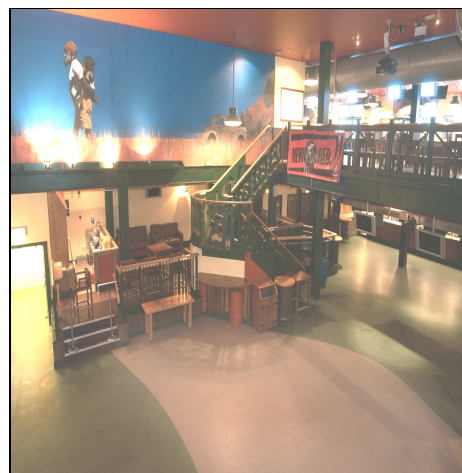
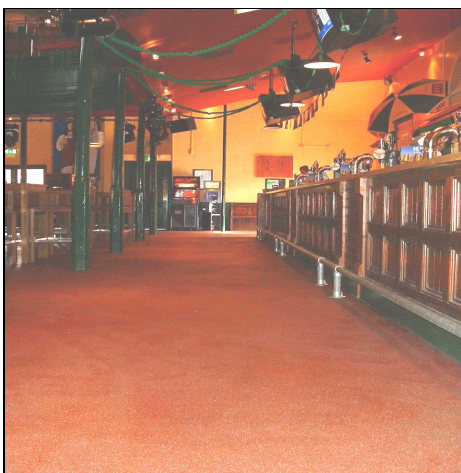
Regent Inns were looking for a hardwearing, decorative floor with slip resistant properties to match the busy requirements of a high street pub.

A floor that could be installed with minimal disruption was necessary, as previous floor installations had resulted in extreme loss of revenue for the company, where sites had to close for up to five days.

### :: Why National Flooring?

National Flooring's specification offered immediate timesaving benefits and we were given one site to test our claim. Following a thoroughly satisfactory installation from the completion deadline to aesthetic appeal and durability, National Flooring was appointed to carry out the entire Walkabout refurbishment programme.

Chris Cotton, Property Development Manager, explained " Our Walkabout bars are the busiest pubs on the high street and we therefore had problems maintaining the floors at a reasonable standard. Our existing flooring could not withstand the volume of foot traffic in the venues so we also needed an extremely hardwearing floor, which is what National Flooring provided. Our refurbished floors are now durable, easy to clean and slip resistant."



**The National Flooring Company Ltd**  
Crusader House  
High Street  
Maxey  
Peterborough  
PE6 9HQ  
UK  
T:01778 343670 F:01778 380912  
W: [www.nationalflooring.co.uk](http://www.nationalflooring.co.uk)  
E: [enquiries@nationalflooring.co.uk](mailto:enquiries@nationalflooring.co.uk)