

Project Reference

M&S Simply Foods Birmingham Airport

:: Installation requirements

Following a recent refurbishment scheme, Birmingham Airport now runs as a single terminal facility and decided to include the addition of M&S Simply Food. The floor had to match the existing branding, offer exceptional durability and match the slip resistance standards set by BAA.

:: Why National Flooring?

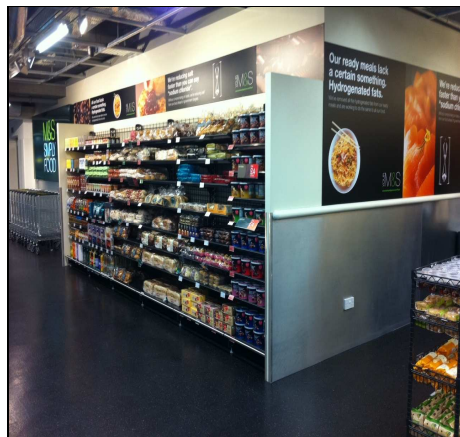
The planning, organisation and implementation of projects within airport facilities is very demanding and is crucial to ensuring a successful installation with minimal disruption. Having previously worked with National Flooring SSP UK Ltd asked for advice.

The existing floor finishes were not providing the required durability and were often in need of maintenance. Having already installed Degafloor at a number of airports, SSP were confident that the resin floors would be resilient to the high footfall, demanding environment. The Degafloor range of MMA resins cure fully within just two hours of installation, reducing disruption and accelerating the speed of installation.

The Degafloor Flake system was chosen for the installation as it is ideally suited to a retail environment. The system offers exceptional flexibility in terms of aesthetics, allowing M&S to match their existing floors and maintain their branded image. To meet the slip resistance standards set by BAA the system was tailored to provide a slightly textured finish, which when tested met the required values.

To avoid disruption to travellers it was critical that the installation was completed as efficiently as possible. The installation was carried out overnight between extremely short timescales from 12am to 5am during the airports quietest periods. A specialised ventilation system was set up to removed the odour from the resins out of the airport.

Mike Coe, Projects Director for SSP UK Ltd comments, "We have worked with National Flooring on a number of projects and always find them extremely helpful and professional. Working in an environment that operates 24/7 we have very stringent regulations and exceptionally tight deadlines. National Flooring always plan and execute each installation to the highest of standards with minimal disruption. As a result we get excellent hardwearing floors that are tailored to specific design requirements."



NATIONAL FLOORING
Floors For Industry

The National Flooring Company Ltd
Crusader House
High Street
Maxey
Peterborough
PE6 9HQ
UK
T:01778 343670 F:01778 380912
W: www.nationalflooring.co.uk
E: enquiries@nationalflooring.co.uk